



# PG&E Corporation

Sanford Bernstein  
Strategic Decisions Conference  
May 27, 2009





# Pacific Gas and Electric Company (PG&E)

- Provides energy to nearly 1 in 20 people in the U.S.
- 70,000 square-mile service territory
- Four main operational units:
  - Electric and gas distribution
  - Electric transmission
  - Gas transmission
  - Electric generation

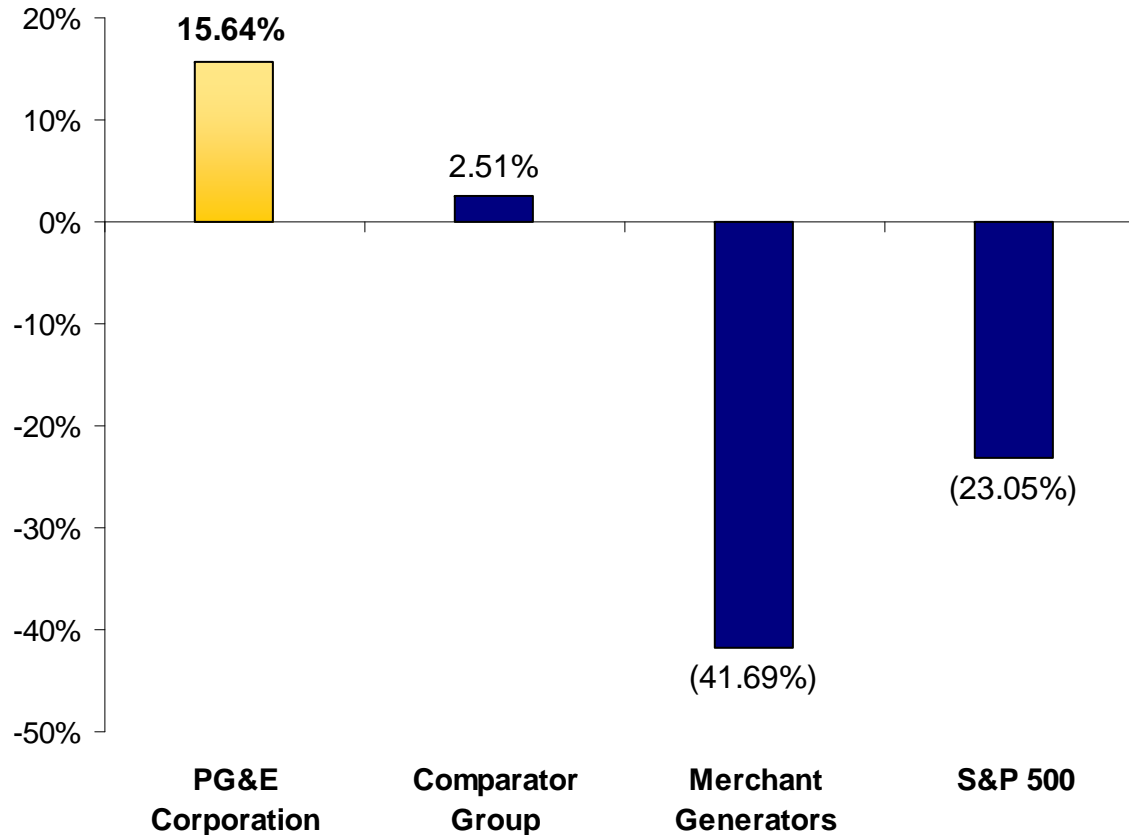


PG&E SERVICE AREA  
IN CALIFORNIA



# 3-year Total Shareholder Return

Total Shareholder Returns 12/31/05 - 12/31/08



Ameren Corporation  
American Electric Power  
Centerpoint Energy

Consolidated Edison  
Entergy Corporation  
FPL Group

**Comparator Group**

NiSource Inc.  
Pinnacle West Capital  
Progress Energy

Southern Company  
TECO Energy  
Xcel Energy Inc.

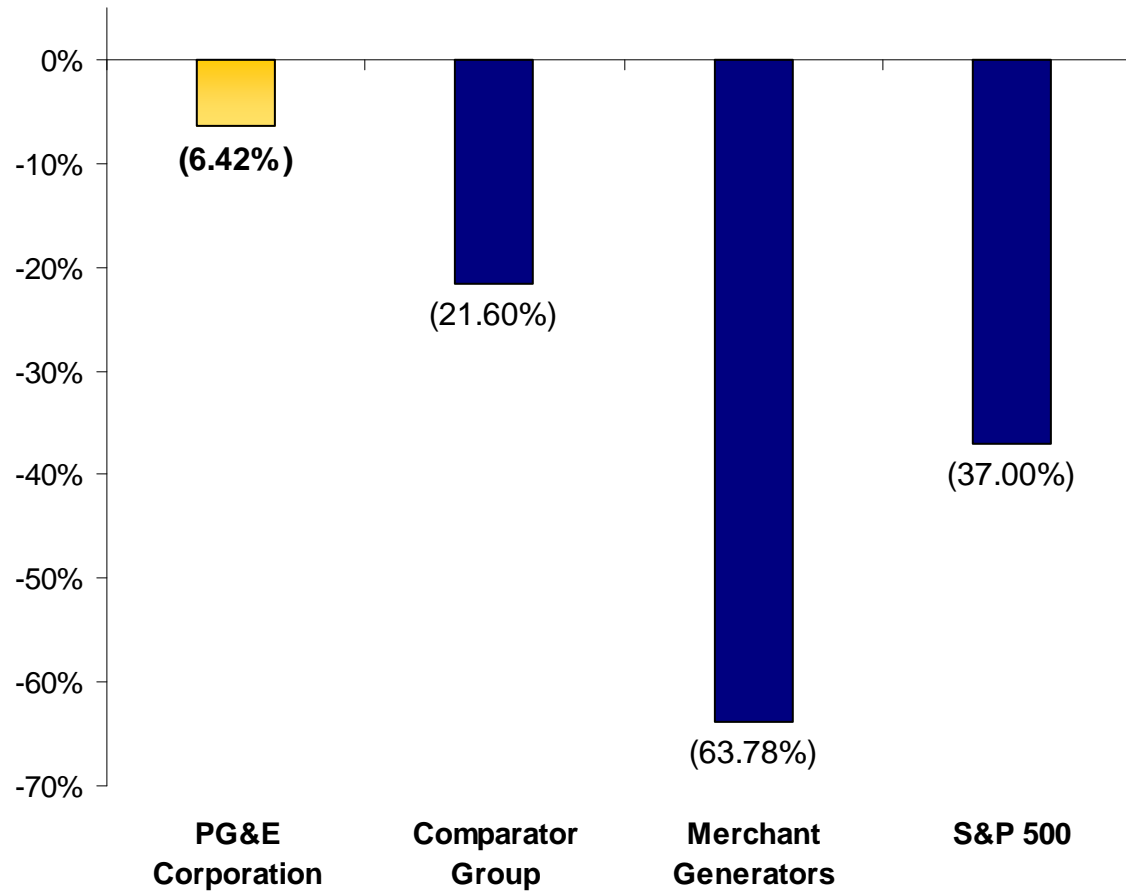
**Merchant Generator Group**

AES Corporation  
Dynegy Inc.  
Mirant Corporation  
Reliant Energy



# 1-year Total Shareholder Return

Total Shareholder Returns 12/31/07 - 12/31/08



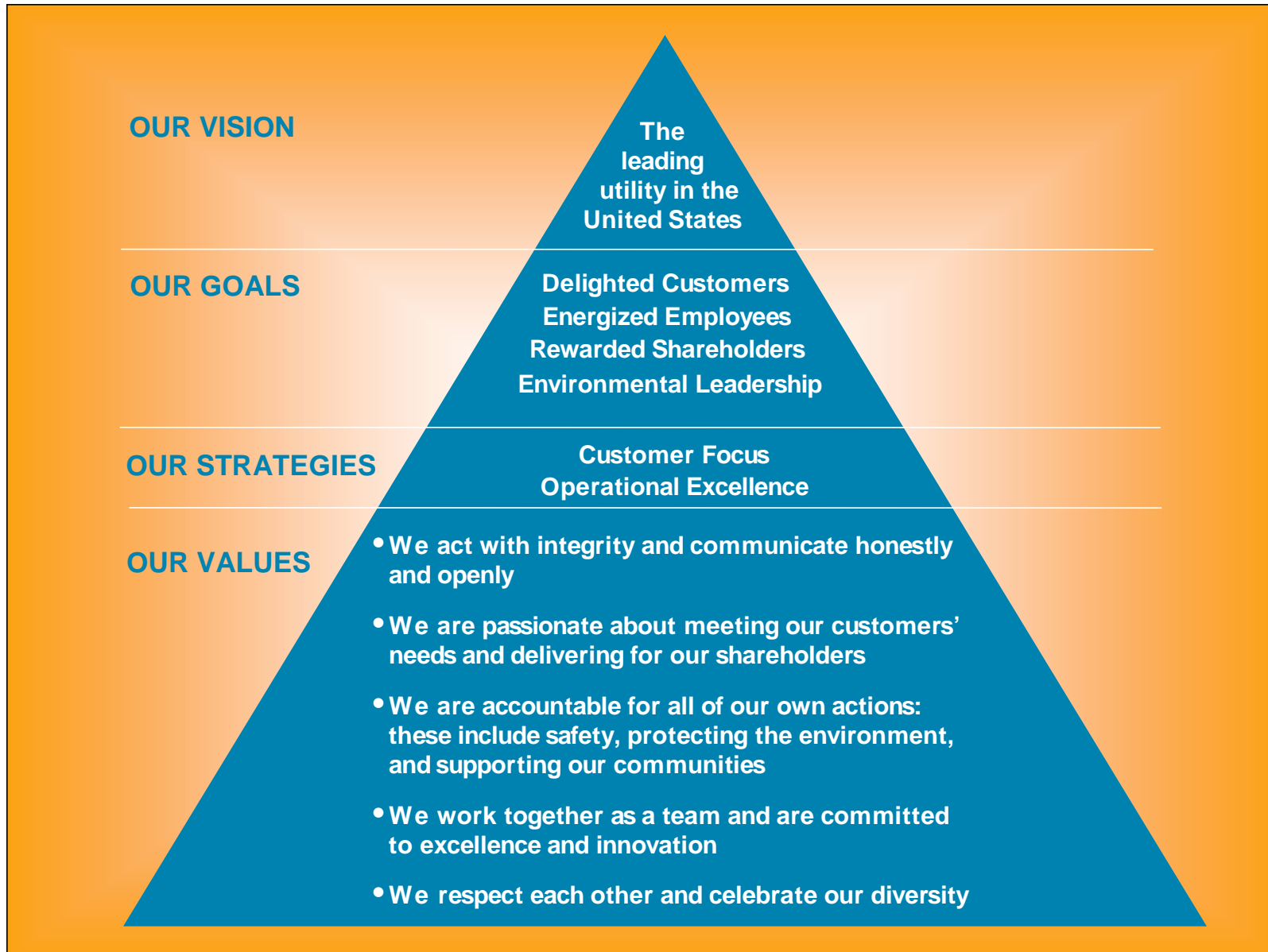


## PCG Investment Case

- **PCG is focused on better service to our customers, which is the foundation of our growth:**
  - **Substantial Cap Ex Program**
  - **Manageable financing requirements**
  - **Decoupled revenues**
  - **Pass-through of procurement costs**
  - **11.45% weighted ROE on 52% equity**
  - **Low carbon footprint**



# Vision and Values





## 2009 Business Priorities

- **Improve reliability**
- **Improve safety and human performance**
- **Deliver on budget, on plan, and on purpose**
- **Drive customer satisfaction**
- **Champion effective regulatory and legislative policies**



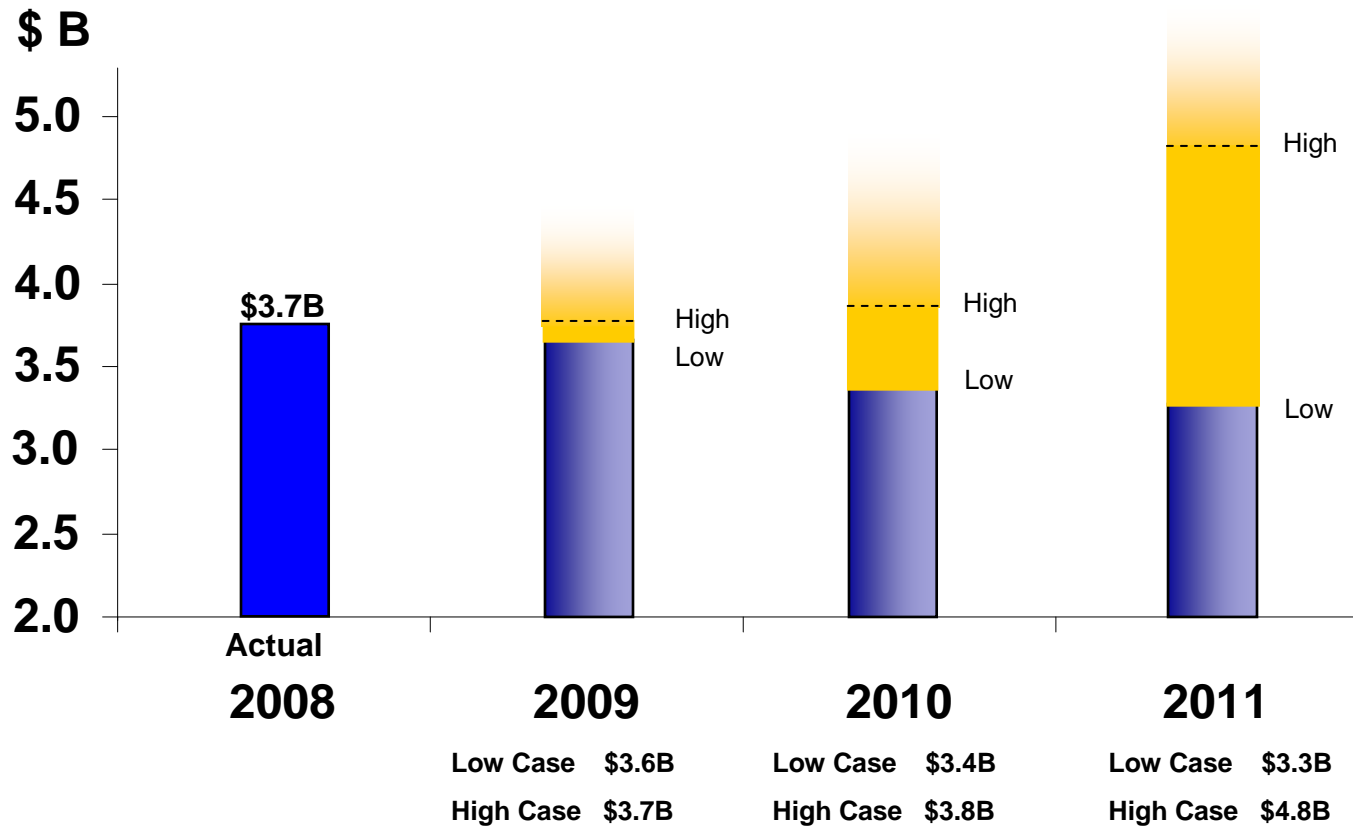
# Key Business Drivers

- **Pre-approved CapEx**
  - **Upgraded SmartMeters**
  - **Electric & Gas Distribution**
    - **Poles and Substations**
  - **Generation**
  - **Transmission**
    - **System Expansion & Replacement**



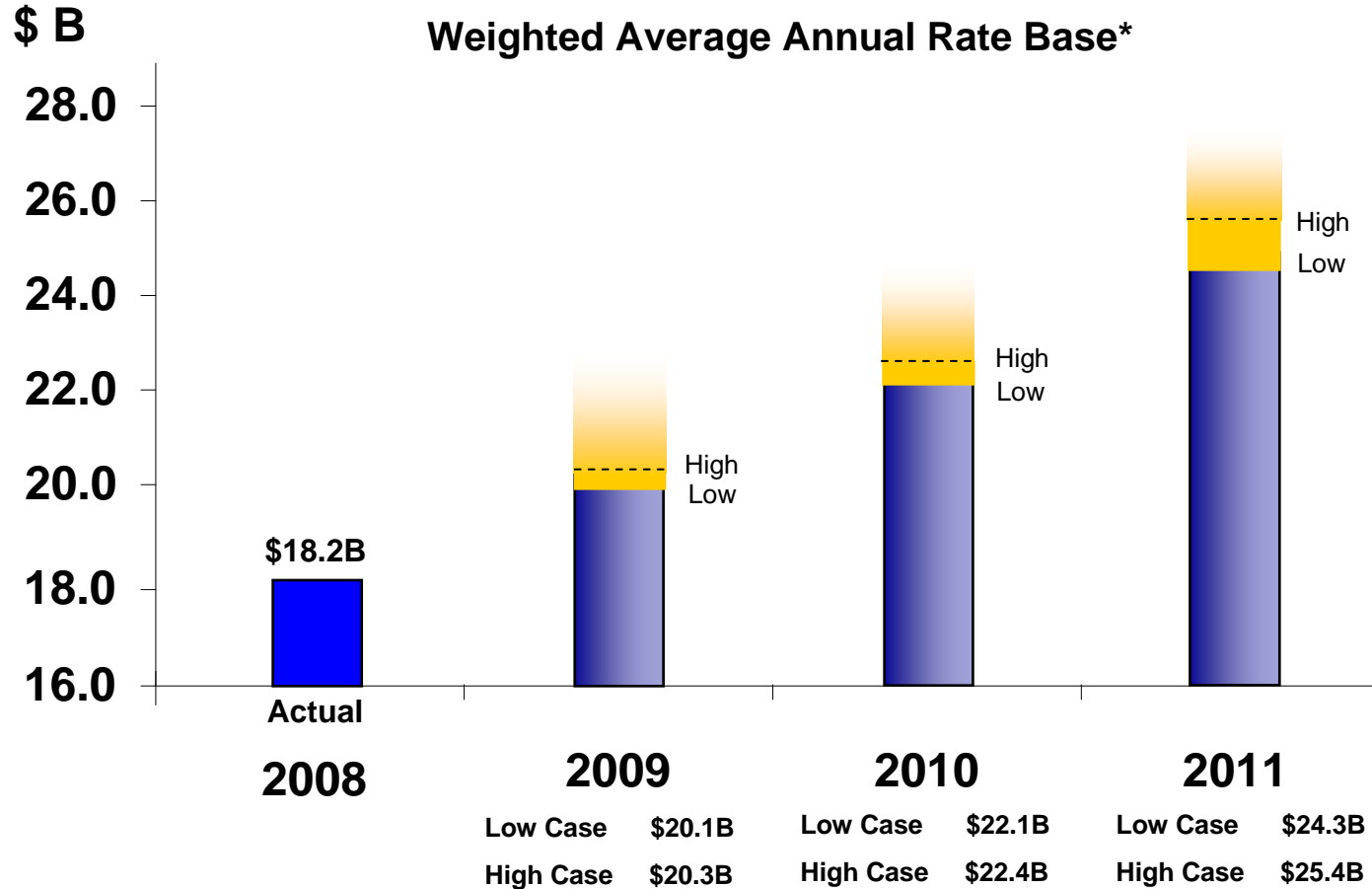
# Capital Expenditure Outlook

## CapEx Outlook





# Rate Base Growth

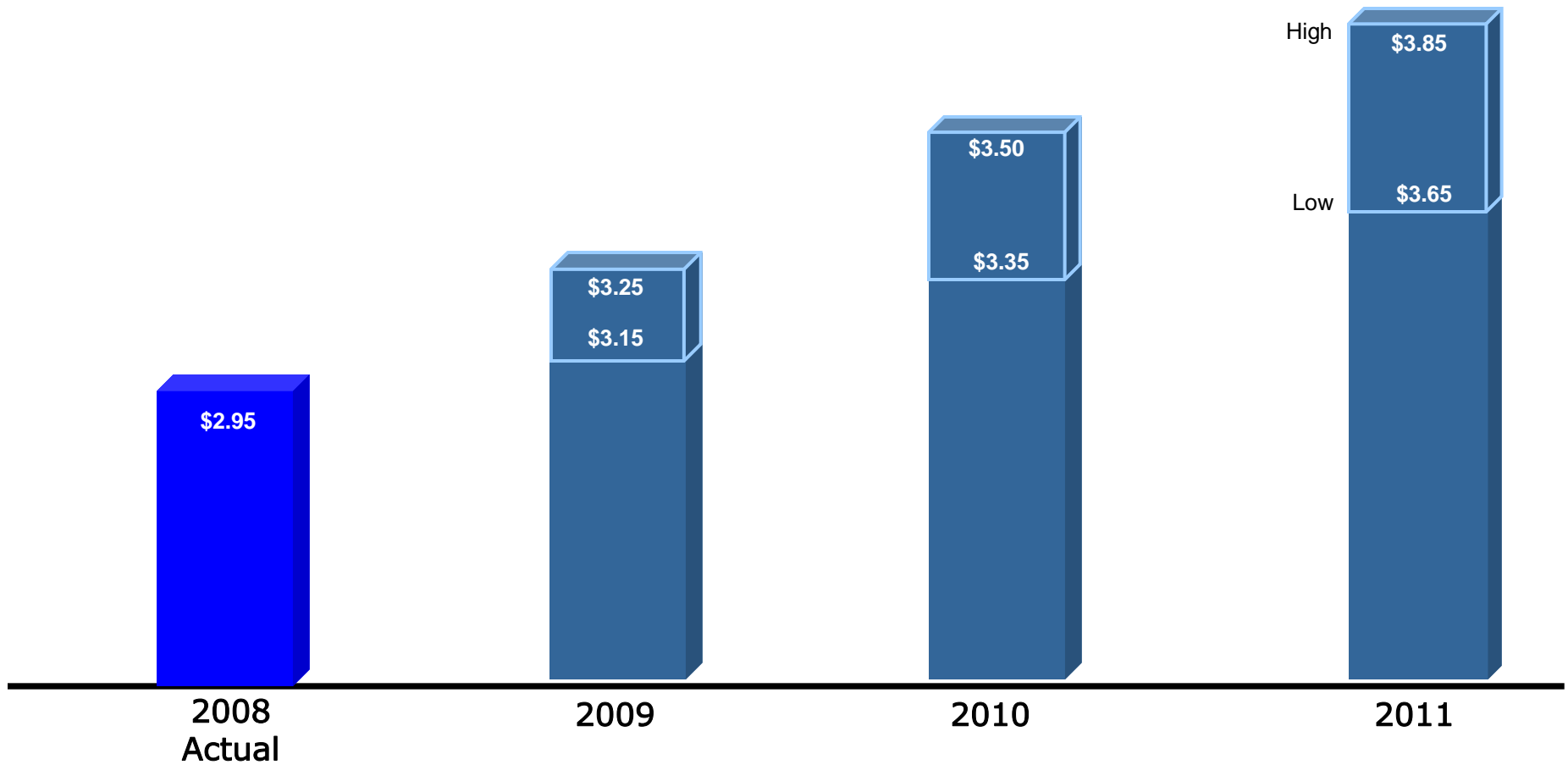


\* Actual 2008 and projected 2009-2011 rate base is not adjusted for the impact of the carrying cost credit that primarily results from the second series of the Energy Recovery Bonds. Earnings will be reduced by an amount equal to the deferred tax balance associated with the Energy Recovery Bonds regulatory asset, multiplied by the Utility's equity ratio and by its equity return. This rate base offset carrying cost declines to zero when the taxes are fully paid in 2012.



# EPS Guidance

## Earnings per Share from Operations



\* Reg G reconciliation to GAAP for 2008 EPS from Operations, and 2009-2011 EPS Guidance available in Appendix and at [www.pge-corp.com](http://www.pge-corp.com)



# Financial Assumptions 2009-2011

## GUIDANCE REFLECTS:

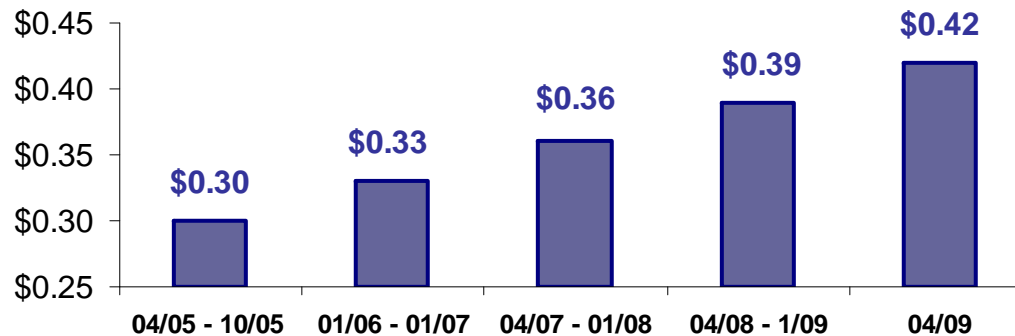
- **Capital expenditures consistent with low and high case ranges**
- **CPUC authorized ROE of at least 11.35% and Utility earns at least 12% on FERC projected rate base**
- **Ratemaking capital structure maintained at 52% equity**
- **CEE incentives, operational changes and efficiencies and tax cash flow consistent with low and high case ranges**
- **Current conditions for debt and equity markets**
- **Resolution of FERC generator claims in 2009-2011 results in financing needs**



# Dividend Policy

- **Sustainable, comparable dividend**
- **Payout ratio range of 50% - 70%**
- **Dividend growth in line with EPS growth.**

**Historical Quarterly Dividends per Share**



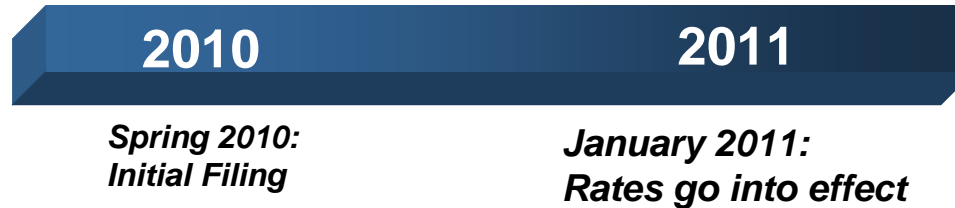


# Key Regulatory Filings

## 2011 General Rate Case



## 2011 Cost of Capital Application



## Transmission Owner Rate Cases





## Legislative Action: GHG

### **Recent Legislative Activity:**

- California AB 32
- Federal activity ongoing

### **PG&E Supports:**

- A cap and trade approach
- Fair allocation of credits
- Recognition of prior actions



# PCG: Outlook for the Future

*Leading renewable and energy efficiency programs...*



*... and limiting risk from new carbon legislation*



## PCG Investment Case

- **PCG is focused on better service to our customers, which is the foundation of our growth:**
  - **Substantial Cap Ex Program**
  - **Manageable financing requirements**
  - **Decoupled revenues**
  - **Pass-through of procurement costs**
  - **11.45% weighted ROE on 52% equity**
  - **Low carbon footprint**

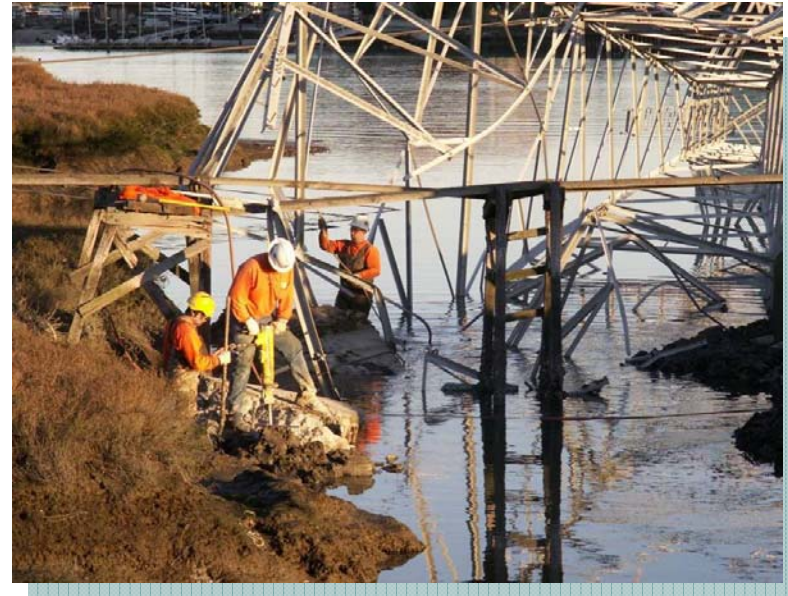


# Cautionary Language Regarding Forward-Looking Statements

This presentation contains management's guidance for PG&E Corporation's 2009, 2010 and 2011 earnings per share from operations, projections of Pacific Gas and Electric Company's (Utility) capital expenditures, rate base and rate base growth, and projections of PG&E Corporation's and the Utility's financing needs. These statements and projections, as well as the underlying assumptions, are forward-looking statements that are based on current expectations which management believes are reasonable. These statements and assumptions are necessarily subject to various risks and uncertainties, the realization or resolution of which may be outside of management's control. Actual results may differ materially. Factors that could cause actual results to differ materially include:

- the Utility's ability to manage capital expenditures and its operating and maintenance expenses within authorized levels;
- the outcome of pending and future regulatory proceedings and whether the Utility is able to timely recover its costs through rates;
- the adequacy and price of electricity and natural gas supplies, and the ability of the Utility to manage and respond to the volatility of the electricity and natural gas markets, including the ability of the Utility and its counterparties to post or return collateral;
- the effect of weather, storms, earthquakes, fires, floods, disease, other natural disasters, explosions, accidents, mechanical breakdowns, disruptions of information technology or computer systems, acts of terrorism, and other events or hazards on the Utility's facilities and operations, its customers, and third parties on which the Utility relies;
- the potential impacts of climate change on the Utility's electricity and natural gas businesses;
- changes in customer demand for electricity and natural gas resulting from unanticipated population growth or decline, general economic and financial market conditions, changes in technology, including the development of alternative energy sources, or other reasons;
- operating performance of the Diablo Canyon Power Plant ("Diablo Canyon"), the availability of nuclear fuel, the occurrence of unplanned outages at Diablo Canyon or the temporary or permanent cessation of operations at Diablo Canyon;
- whether the Utility can maintain the cost savings it has recognized from operating efficiencies it has achieved and identify and successfully implement additional sustainable cost-saving measures;
- whether the Utility incurs substantial expense to improve the safety and reliability of its electric and natural gas systems;
- whether the Utility achieves the California Public Utilities Commission's (CPUC) energy efficiency targets and recognizes any incentives the Utility may earn in a timely manner;
- the impact of changes in federal or state laws, or their interpretation, on energy policy and the regulation of utilities and their holding companies;
- the impact of changing wholesale electric or gas market rules, including new rules of the California Independent System Operator (CAISO) to restructure the California wholesale electricity market;
- how the CPUC administers the conditions imposed on PG&E Corporation when it became the Utility's holding company;
- the extent to which PG&E Corporation or the Utility incurs costs and liabilities in connection with litigation that are not recoverable through rates, from insurance, or from other third parties;
- the ability of PG&E Corporation, the Utility, and counterparties, to access capital markets and other sources of credit in a timely manner on acceptable terms, especially given the recent deteriorating conditions in the economy and financial markets;
- the impact of environmental laws and regulations and the costs of compliance and remediation;
- the effect of municipalization, direct access, community choice aggregation, or other forms of bypass;
- the outcome of federal or state tax audits and the impact of changes in federal or state tax laws, policies, or regulations; and
- other factors and risks discussed in PG&E Corporation's and the Utility's 2008 Annual Report on Form 10-K and other reports filed with the Securities and Exchange Commission.

# Appendix





# CPUC Cost of Capital Mechanism

Benchmark (Oct. 06 – Sept. 07)	
Rating	Benchmark
A	6.02
Baa	6.26

Moody's Utility Bond Yield Index Current Avg. (Oct. 08 – Apr. 09)	
Rating	
A	6.76
Baa	8.19

If the Moody's Utility Bond Yield Index average for October 2008 – September 2009 moves above 100 basis points from the benchmark ...



Then our authorized ROE (11.35%) will move up one-half of the change in the index and cost of debt is reset to embedded plus projected cost



## 2008 EPS - Reg G Reconciliation

	<u>2008</u>
EPS on an Earnings from Operations Basis*	<b>\$2.95</b>
Items Impacting Comparability**	<u><b>0.68</b></u>
EPS on a GAAP Basis	<b>\$3.63</b>

\* Earnings per share from operations is a non-GAAP measure. This non-GAAP measure is used because it allows investors to compare the core underlying financial performance from one period to another, exclusive of items that do not reflect the normal course of operations.

\*\* Items impacting comparability reconcile earnings from operations with consolidated net income as reported in accordance with GAAP. For the three and twelve months ended December 31, 2008, PG&E Corporation recognized \$257 million of net income resulting from a settlement of tax audits for tax years 2001 through 2004. Of this amount, \$154 million was related to PG&E Corporation's former subsidiary, National Energy & Gas Transmission, Inc., and was recorded as income from discontinued operations



# EPS Guidance - Reg G Reconciliation

2009	<u>Guidance Range</u>	
	<u>Low</u>	<u>High</u>
EPS Guidance on an Earnings from Operations Basis <sup>(1)</sup>	<b>\$3.15</b>	<b>\$3.25</b>
Estimated Items Impacting Comparability <sup>(2)</sup>		
Tax Refunds <sup>(3)</sup>	<b>\$0.13</b>	<b>\$0.16</b>
Recovery of hydro divestiture costs <sup>(4)</sup>	<b>\$0.07</b>	<b>\$0.07</b>
Accelerated work on gas system <sup>(5)</sup>	<b>(\$0.15)</b>	<b>(\$0.12)</b>
Estimated EPS on a GAAP Basis	<b>\$3.20</b>	<b>\$3.36</b>
2010	<u>Guidance Range</u>	
	<u>Low</u>	<u>High</u>
EPS Guidance on an Earnings from Operations Basis <sup>(1)</sup>	<b>\$3.35</b>	<b>\$3.50</b>
Estimated Items Impacting Comparability	<b>\$0.00</b>	<b>\$0.00</b>
Estimated EPS on a GAAP Basis	<b>\$3.35</b>	<b>\$3.50</b>
2011	<u>Guidance Range</u>	
	<u>Low</u>	<u>High</u>
EPS Guidance on an Earnings from Operations Basis <sup>(1)</sup>	<b>\$3.65</b>	<b>\$3.85</b>
Estimated Items Impacting Comparability	<b>\$0.00</b>	<b>\$0.00</b>
Estimated EPS on a GAAP Basis	<b>\$3.65</b>	<b>\$3.85</b>

- (1) Earnings per share from operations is a non-GAAP measure. This non-GAAP measure is used because it allows investors to compare the core underlying financial performance from one period to another, exclusive of items that do not reflect the normal course of operations.
- (2) Items impacting comparability reconcile earnings from operations with consolidated Income Available for Common Shareholders as reported in accordance with GAAP.
- (3) Tentative agreement to resolve federal tax refund claims related to tax years 1998 and 1999.
- (4) Recovery of costs incurred in connection with efforts to determine the market value of hydroelectric generation facilities.
- (5) Forecasted cost to accelerate the performance of system-wide gas integrity surveys and associated remedial work.